



INDOFINE Chemical Company, Inc.

121 Stryker Lane, Bldg. 30, Suite 1 • Hillsborough, NJ 08844 • U.S.A.

Phone: (908) 359-6778 • FAX: (908) 359-1179

website: www.indofinechemical.com

e-mail: chemical@indofinechemical.com

CERTIFICATE OF ANALYSIS

Catalog Number: 06-549

Product Name: **EPIMEDIN C**
(Baohuoside VI)

CAS Number: [110642-44-9]

Lot Number: 1611910

Chemical Formula: $C_{39}H_{50}O_{19}$

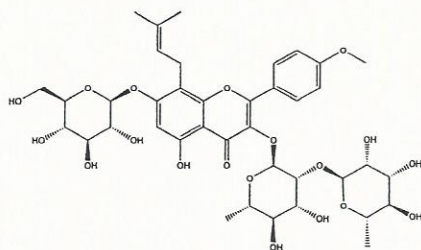
Molecular Weight: 822.81

Appearance: Yellow powder

Loss on Drying: 1.26%

Storage: Store in a cool, dry place. Protect from light.

Purity(HPLC): 98.67%





INDOFINE Chemical Company, Inc.

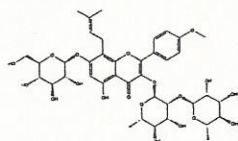
121 Stryker Lane, Bldg. 30, Suite 1 • Hillsborough, NJ 08844 • U.S.A.

Phone: (908) 359-6778 • FAX: (908) 359-1179

website: www.indofinechemical.com

e-mail: chemical@indofinechemical.com

HPLC ANALYSIS

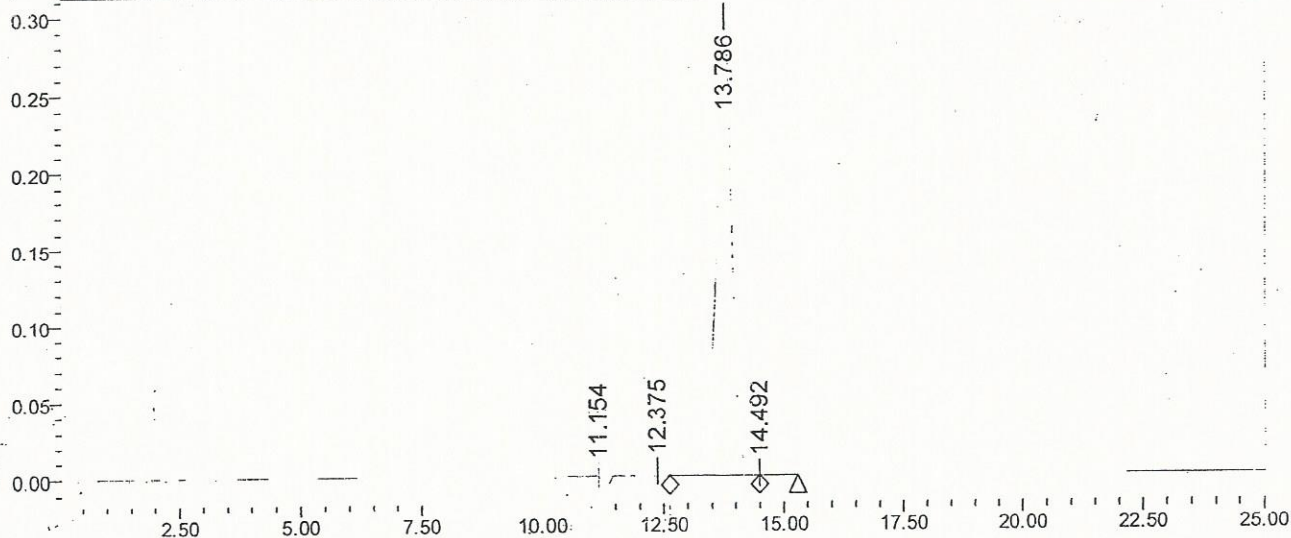


Catalog No.: 06-549
Product Name: Epimedin C
Lot No.: 1611910

SAMPLE INFORMATION

Sample Name:	Epimedin C	Acquired By:	System
Sample Type:	Unknown	Sample Set Name:	
Vial:	46	Acq. Method Set:	Epimedin C
Injection #:	1	Processing Method:	Samples
Injection Volume:	5.00 ul	Channel Name:	270.0nm
Run Time:	25.0 Minutes	Proc. Chnl. Descr.:	PDA 270.0 nm

Auto-Scaled Chromatogram



Peak Results

	RT	Area	% Area	USP Plate Count	USP Resolution
1	11.154	3766	0.05	8871.19	
2	12.375	59495	0.83	9763.40	2.69
3	13.786	7085551	98.67	9624.36	2.54
4	14.492	32056	0.45		